

METROPOLITAN REVIEW

JULY/AUGUST 1990

\$6.00



THE CHICAGO VILLA II · RAYMOND KASKEY · CARL MILLES

NORTH SEMINARY PLACE

Courtyards, Setbacks, Recessed Terraces, and Arcades Result from the Manipulation of the House's Volume by Madel Gibbons Associates

Located on a prominent corner lot in Chicago's DePaul Neighborhood, this project involves gutting and altering an existing brick structure and linking to it a 2,500-square-foot brick addition.

The volume of the structure is manipulated to form courtyards, setbacks, recessed terraces and arcades to reduce the mass of the structure, as well as to blend it with the site.

The design is reminiscent of Edwardian English country homes with large concentrated expanses of windows that are two stories tall. The base of the building is of smooth and rusticated limestone with gray-beige brick. The upper portion of the structure is a dark red brick, which matches the existing structure's brick color.

The project contains four bedrooms plus a grand master suite with its own courtyard and roof deck.

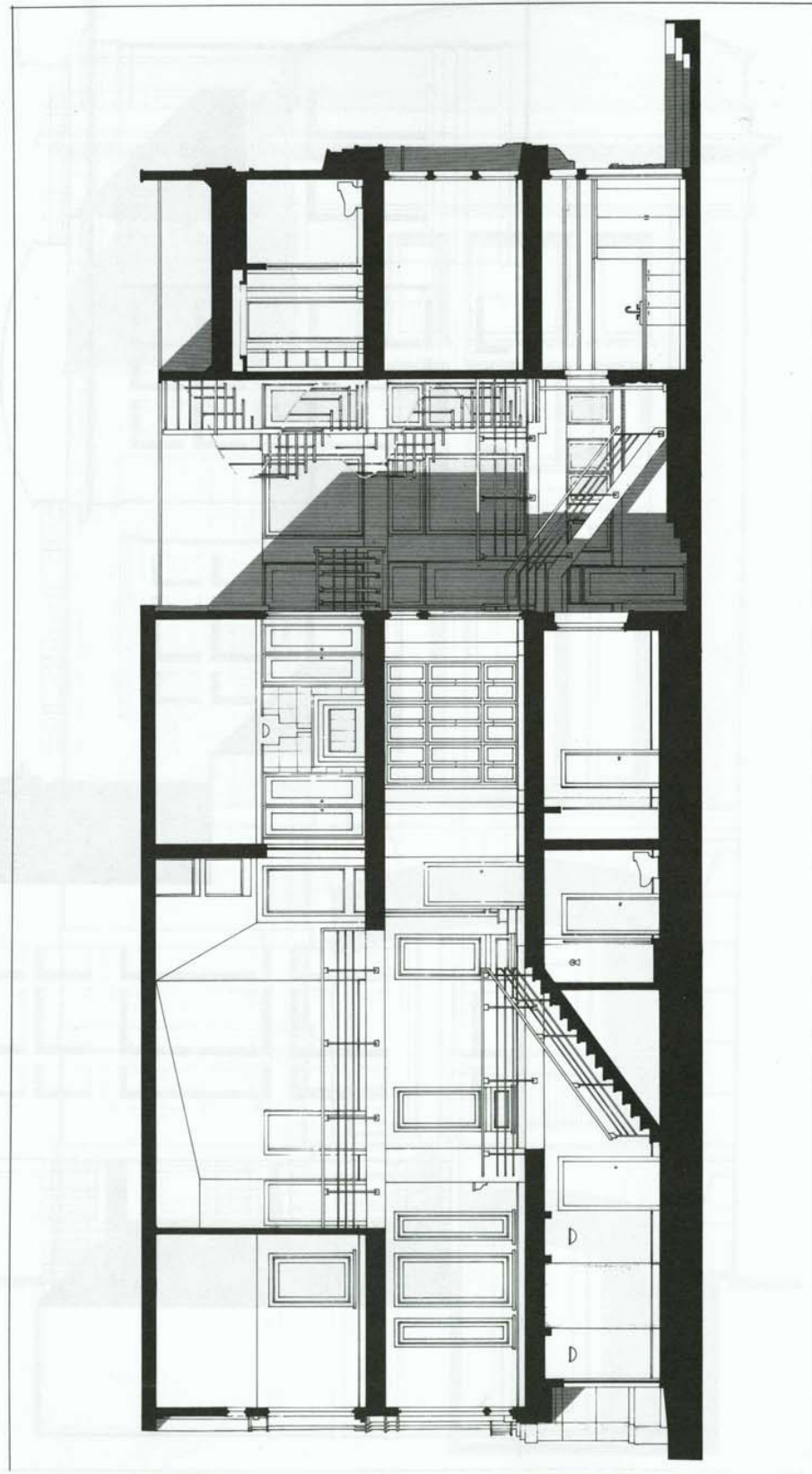
2209 NORTH SEMINARY

Chicago, Illinois
Madel Gibbons Associates, Architects
B&A Limited, Clients
B&A Limited, General Contractors/Mechanical Engineers
Stearn-Joglekar, Structural Engineers



MEDOW MARQUEZ RESIDENCE

An Existing Frame House is Gutted with a New Addition that Adds Distinction and Classic Appeal by Madel Gibbons Associates



This 4,500-square-foot renovation consists of gutting an existing frame structure and adding a three-story addition to the rear. The addition forms a courtyard between it and the existing structure.

In addition to the numerous windows in the courtyard as well as on the facades, a three story atrium defined by undulating floor openings edged with sleek railings illuminates the interior of the house.

MEDOW-MARQUEZ RESIDENCE

Chicago, Illinois
 Madel Gibbons Associates, Architects
 Jonathan Medow and Rosanna Marquez, Client
 M.W. Carlson, General Contractors
 Stearn-Joglekar, Structural Engineers
 Duignan-Woods, Chartered, Mechanical Engineers

